

GE
Security

Smooth operator

Legend™ dome featuring
SilkTrak™ technology



Legend with SilkTrak—a giant leap forward in PTZ dome cameras

The days of stepping through pan/tilt positions—and the jerky video that results—are over. GE's Legend™ dome camera leaps ahead of ordinary PTZ domes with its exclusive SilkTrak™ technology.

SilkTrak's direct drive replaces gears and belts to move the camera with silky-smooth precision. That means you'll see clear, sharp video even as the camera is moving, revealing details like facial features and license plate numbers that make identification easier. SilkTrak is so precise, you can program presets with accuracy of $\pm 0.015^\circ$. As an added benefit, the SilkTrak direct drive has fewer parts for greater reliability.

Give yourself a hand for easy camera installation

Like all GE dome cameras, Legend is fast and easy to set up. But Legend goes one better, with one-handed camera

installation. Simply align the notches on the camera assembly with the tabs on the housing, then slide the camera up until it locks into place. To remove the camera, simply push the assembly up and turn it clockwise to release it from the retaining tabs. You can't get much easier than that.

You'll flip over Legend's electronic image adjustment

When a subject passes directly under a conventional PTZ camera, the camera has to spin on its pan axis to continue to track the subject right side up. But not with Legend. Its electronic image flip feature automatically flips the video image when the camera passes through the bottom of its tilt axis. Legend also offers 180° of tilt travel, allowing you to view activity above the horizon.

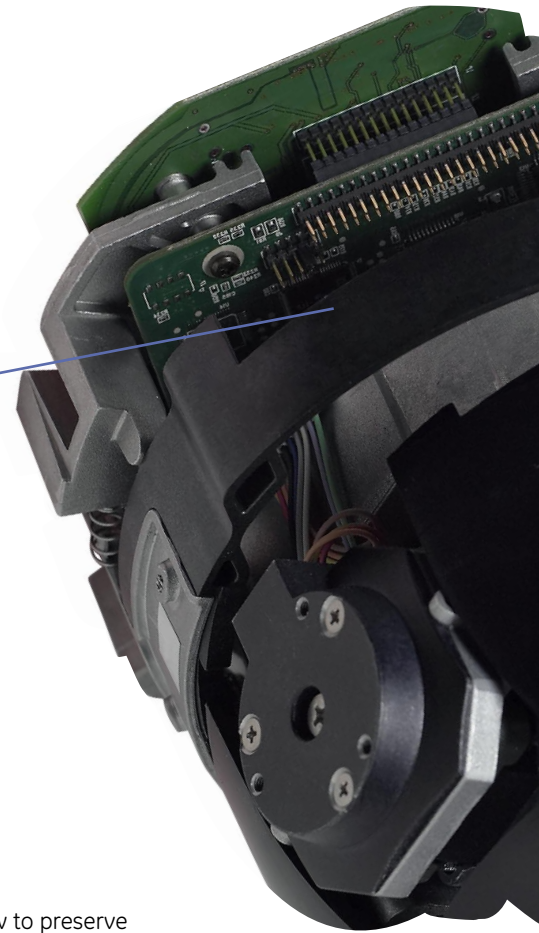


One-hand camera installation

Line it up and slide it in. Push up and twist to slide it out.

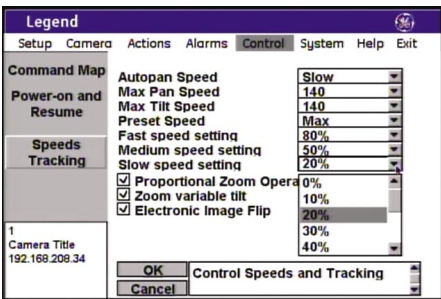
Exclusive SilkTrak direct drive technology

Smooth, precise pan/tilt motion eliminates wobbly images from conventional stepper motors, so you can see sharp, detailed video, even when the camera's moving.



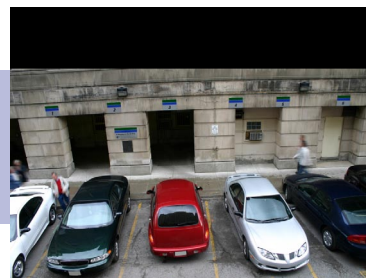
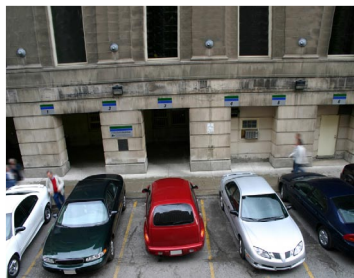
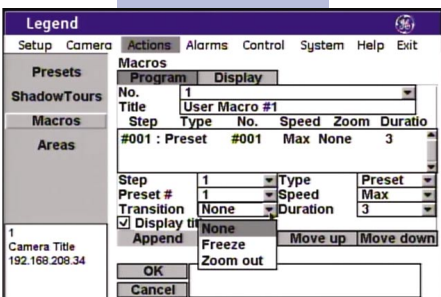
Graphical menus

Use your keypad joystick and monitor to easily navigate through your programming choices.



Privacy mask

Blocks portions of the camera's field of view to preserve privacy while continuing to monitor appropriate areas. Ideal for crowded urban environments where private property falls within the camera's field of view.



Privacy masking shows only what you need to see

Legend comes with 24 privacy masks, eight of which can be displayed simultaneously. Privacy masking lets you block portions of the camera's field of view that include private property. So the camera only shows security personnel what they need to see. For example, at a combination commercial and residential building, you can set the privacy mask to block out apartment windows on the upper floors while monitoring the first-floor storefront and street. Privacy masking helps you maintain a secure environment while respecting people's privacy.

Lots of choices that are easy to choose

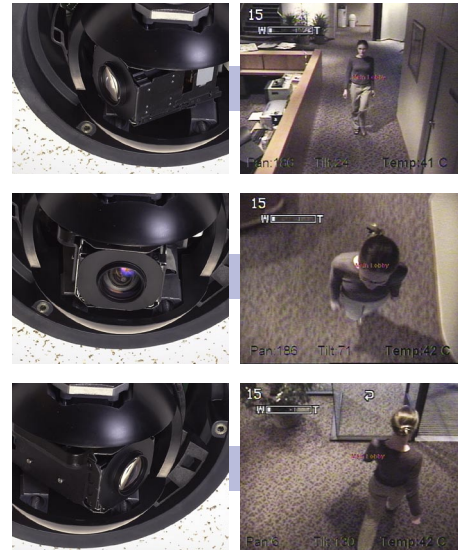
Legend lets you program a wide selection of presets, tours, alarms and other settings to make sure you get the exact video you need in every installation. For example, each of the 127 presets stores the pan, tilt and zoom position, plus camera settings such as backlight compensation, iris and shutter speed. But even with all these choices, Legend is easy to program. Simply connect the camera to a KTD-405 or compatible keypad and standard video monitor to bring up Legend's graphical interface. Then use the joystick as you would use a mouse to easily navigate through the menus and programming options.

Site memory stored in housing

The Legend housing stores site-specific memory, so you can easily replace cameras or move them to different locations. The camera automatically operates using the housing memory. You don't have to go through the programming process with every camera swap.

Electronic image flip

Legend's electronic image adjustment automatically flips the video image when the camera passes through the bottom of its tilt travel. It can keep the subject right side up without having to spin on its pan axis.



26x day/night camera

In low-light conditions, Legend's camera automatically switches from color to monochrome mode. A 26x optical and 12x digital give you total zoom up to 312x. Image stabilization is available for installations prone to vibration such as light poles and parking garages.

Closed-loop position system

Legend's closed-loop system provides continuous feedback on the camera's position as it moves. That means you can program presets with accuracy of $\pm 0.015^\circ$, over six times more precise than ordinary PTZ domes.



U.S.
T 888 GE SECURITY
F 541 752 9097

Asia
T 852 2907 8108
F 852 2142 5063

Australia
T 61 3 9259 4700
F 61 3 9259 4799

Europe
T 32 2 725 11 20
F 32 3 721 86 13

Latin America
T 305 593 4301
F 305 593 4300

www.gesecurity.com

© 2005 General Electric Company
All Rights Reserved

Advanced capabilities for high-security applications

The Legend PTZ dome camera incorporates advanced video surveillance features that make it ideal for your most challenging applications, including:

Airports and casinos

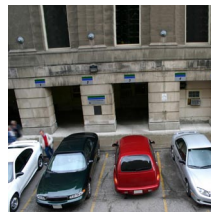
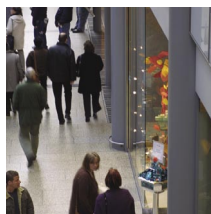
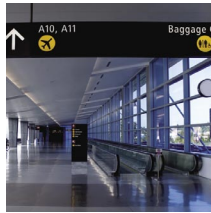
In high-security installations, you'll appreciate Legend's smooth, precise motion that gives you clear video—and the details that make identification easier—even when the camera's moving.

Malls and large retail stores

The electronic image flip makes it easier to track subjects as they move through your mall, grocery store or other retail environment.

High-rise buildings

Privacy masks let you shield apartments and other private property from the camera's field of view, giving you the right balance of enterprise security and personal privacy.



Secure your operations with a name you can trust—GE

GE's security business spans the globe as a technological leader in the rapidly growing electronic security industry—helping you protect your people, your property, your customers and your bottom line. For more than 25 years, we've been designing and manufacturing video surveillance, access control, intrusion and fire detection, explosives and narcotics detection, key control and fiber-optic transmission systems.

When you choose security systems from GE, you can integrate advanced technologies with equipment you already have. GE consistently and significantly invests in research and development to improve current security technologies, create new ones and incorporate valuable third-party inventions into our products. We also incorporate backward compatibility into the design process so the latest innovations will work in tandem with established security technologies.

What's more, we can offer something that's hard to put a value on: the confidence that comes from working with one of the world's most respected companies, one that has been creating new technologies and making lives better for more than 110 years.



imagination at work